



TELESCOPIC  
ARTICULATED BOOM LIFTS  
**REACH160**



## SECURITY

Regardless of the position of the basket, the condition of the machine is constantly monitored. An audible alarm will alert you when excessive tilt is detected.

An electric emergency lowering pump allows the operator to safely return in case of a problem.



SAFETY

**Basket joy stick controls with deadman pedal**

PROTECTS AGAINST ACCIDENTAL MOVEMENTS



SECONDARY PROTECTION SYSTEM

**Anti-crushing system**

THE MACHINE TURNS OFF AUTOMATICALLY



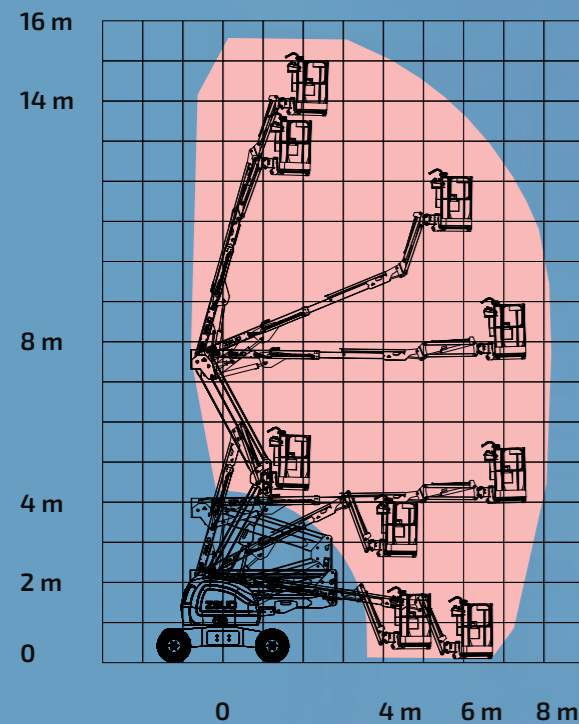
## TELESCOPIC ARTICULATED BOOM LIFTS

are machines designed for general construction works. Undoubtedly, their most important advantage is high mobility. Thanks to Reach160, assembly, finishing or service works can be performed faster, cheaper and, above all, safer. The ability to move the platform both vertically

and horizontally and a continuous 360-degree tower rotation are features that distinguish the Reach160 from competing devices. The telescopic articulated system and the mobility of the machine enable work in partially finished facilities where access is difficult.

## WORKING OUTREACH

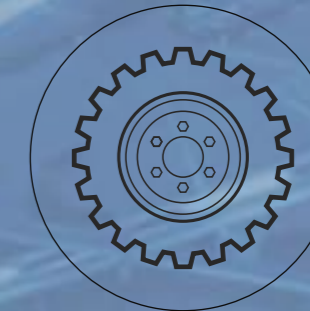
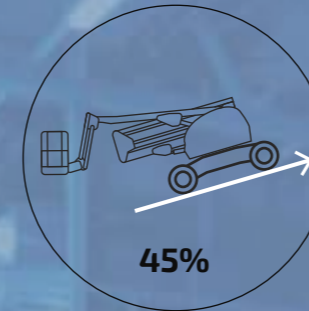
Optimized construction of the boom allows working at a height of up to 16 m and a maximum lateral reach of up to 7.55 m. The positioning of the platform is facilitated by the JIB arm with a length of 1.25 m and 1400 vertical motion range.



● 252 kg  
Throughout the workspace

## PERFECT OFF-ROAD ABILITIES

The drive, equipped with 4 independent hydraulic propulsors, ensures safe movement in the terrain. 4x4 drive and off-road threaded tires increase the rough terrain characteristics of the machine. The 4x4 mode makes it easier to access loading ramps. REACH160 easily overcomes even hills up to 45% slope. The 4x2 mode provides the driving speed necessary for efficient movement.



### BASIC PARAMETERS

LIFTING CAPACITY  
[kg]

OUTREACH  
[m]

HORIZONTAL OUTREACH  
[m]

SWING  
TYPE

HYDRAULIC  
DRIVE

ENGINE  
[kW]

DIMENSIONS  
[mm]

252

16

7,55

CONTINUOUS 360°

4x4

STAGE V, 18,6

5900\*x2450x2300 H

\*IN TRANSPORT POSITION





# EXCELLENT AS STANDARD

The increased load capacity of 252 kg allows the work of two people with additional equipment. The standard equipment of the basket with 230 / 380V sockets allows you to connect external power tools, including a welding machine. Standard work lights in the basket make work easier and safer.

## STANDARD FEATURES

- ✓ PROPORTIONAL CONTROL SYSTEM
- ✓ PERKINS DIESEL ENGINE 404D-22 STAGE V
- ✓ 4X4 DRIVE
- ✓ CONTINUOUS 360° SWING
- ✓ PLATFORM SUPPLIED WITH 230V 1-PHASE LINE / 380V 3-PHASE LINE



## REACH160 EXTRA FEATURES

- REMOTE DIAGNOSTIC SYSTEM
- BUILT-IN GPS ALLOWING MACHINE MONITORING
- 1-PHASE 230V 3,5KW GENERATOR
- 3-PHASE 380V 6KW GENERATOR
- PLATFORM SUPPLIED WITH PNEUMATIC SUPPLY LINE
- ANTI-THEFT SYSTEM



[youtu.be/Wfp4ZBZ0njU](https://youtu.be/Wfp4ZBZ0njU)




SCAN THE QR CODE TO SEE THE VIDEO



COMFORT OF WORK



CONTROL PRECISION

**ROUGH TERRAIN CRANE REX25 RT**

Do you deal with engineering construction, are you a manufacturer of large prefabricated elements, do you build halls or houses? You need a crane to do these jobs and above all easily reach the worksite.

[rexmobilecrane.nl](http://rexmobilecrane.nl)

Tool box

AND A DOCUMENT HOLDER

PROPORTIONAL MOTION CONTROL

CONTROL PANEL PROTECTED BY A COVER



ZBUD LTD, MADE IN EU

ŻABIENSKA 6, 33-200 DĄBROWA TARNOWSKA, POLSKA.

COPYRIGHT ©2022 ZBUD. ALL RIGHTS RESERVED. REPRODUCTION AND COPYING OF ANY PART OF CONTENTS IS NOT ALLOWED FOR ANY PURPOSES WITHOUT ZBUD'S APPROVAL.

[ZBUD.COM.PL](http://ZBUD.COM.PL)

PRODUCT SPECIFICATIONS ARE SUBJECT TO CHANGE WITHOUT NOTICE AND OBLIGATION. THE PHOTOGRAPHS AND/OR DRAWING IN THIS DOCUMENT ARE FOR ILLUSTRATIVE PURPOSE ONLY. PLEASE CONSULT YOUR LOCAL DEALER FOR MORE INFORMATION.