

Dimension Sheets
Electric Wire Rope Hoist NOVA

1. NOVA NB

2. NOVA NC

3. NOVA ND

4. NOVA NE

5. NOVA NF

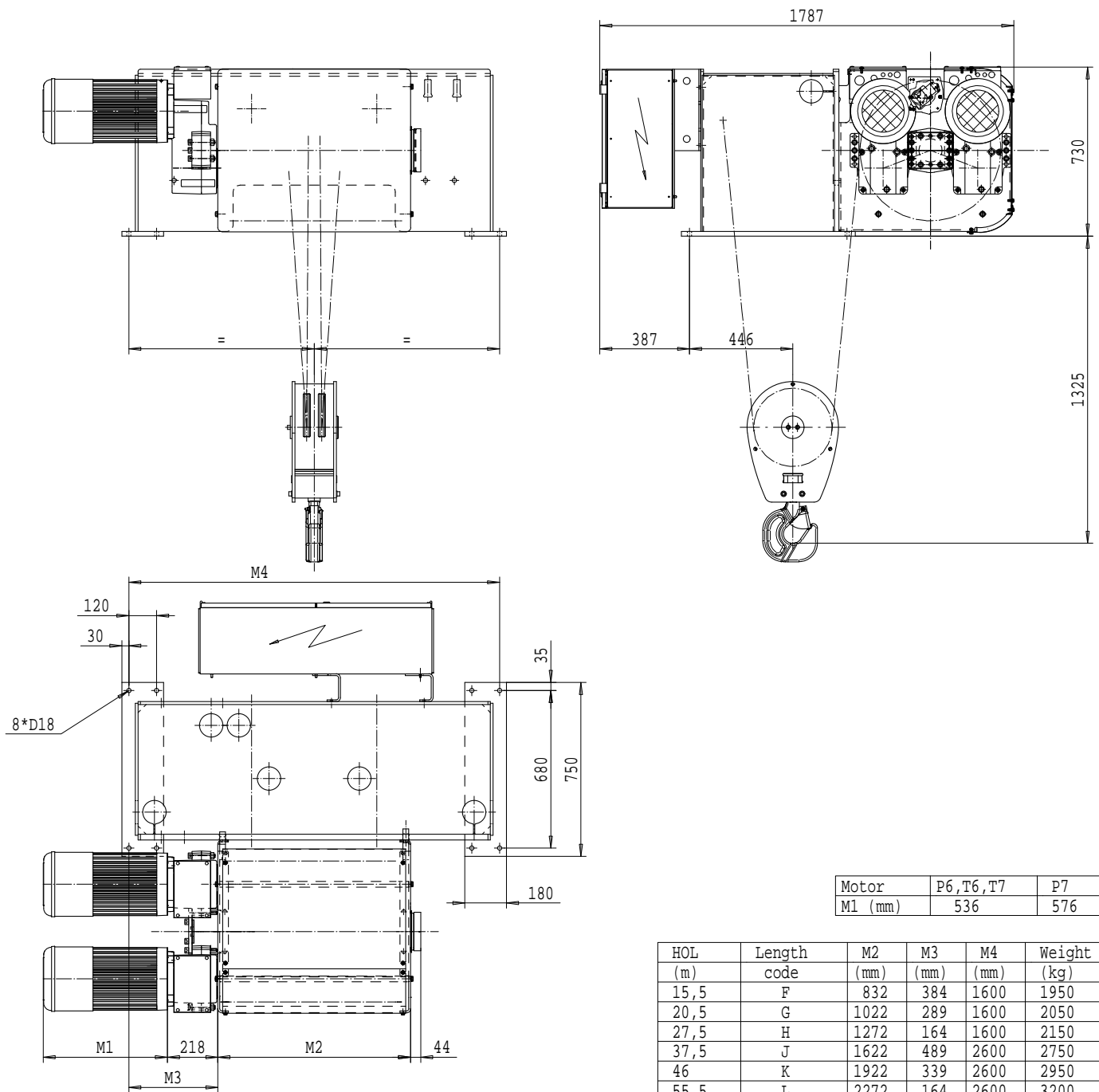
PROD_REF	HOIST_TYPE	REEVING	DRAWING_NR
NF-F-22	HOIST; FIXED	2x2 ROPE FALLS	D002331-A
NF-F-24	HOIST; FIXED	2x4 ROPE FALLS	D002333-A
NF-F-26	HOIST; FIXED	2x6 ROPE FALLS	D002335-A
NF-F-28	HOIST; FIXED	2x8 ROPE FALLS	D002337-A
NF-M-22	TROLLEY; DOUBLE GIRDER	MEDIUM, 2x2 ROPE FALLS	D002332-A
NF-M-24	TROLLEY; DOUBLE GIRDER	MEDIUM, 2x4 ROPE FALLS	D002334-A
NF-M-26	TROLLEY; DOUBLE GIRDER	MEDIUM, 2x6 ROPE FALLS	D002336-A
NF-M-28	TROLLEY; DOUBLE GIRDER	MEDIUM, 2x8 ROPE FALLS	D002338-A

NOVA

Elektroseilzug
Electric wire rope hoist

HOIST; FIXED, 2x2 ROPE FALLS

Hoist type:
NF22F...



Motor	P6, T6, T7	P7
M1 (mm)	536	576

HOL (m)	Length code	M2 (mm)	M3 (mm)	M4 (mm)	Weight (kg)
15,5	F	832	384	1600	1950
20,5	G	1022	289	1600	2050
27,5	H	1272	164	1600	2150
37,5	J	1622	489	2600	2750
46	K	1922	339	2600	2950
55,5	L	2272	164	2600	3200
62,5	M	2522	464	3450	3700
71	N	2822	314	3450	3900

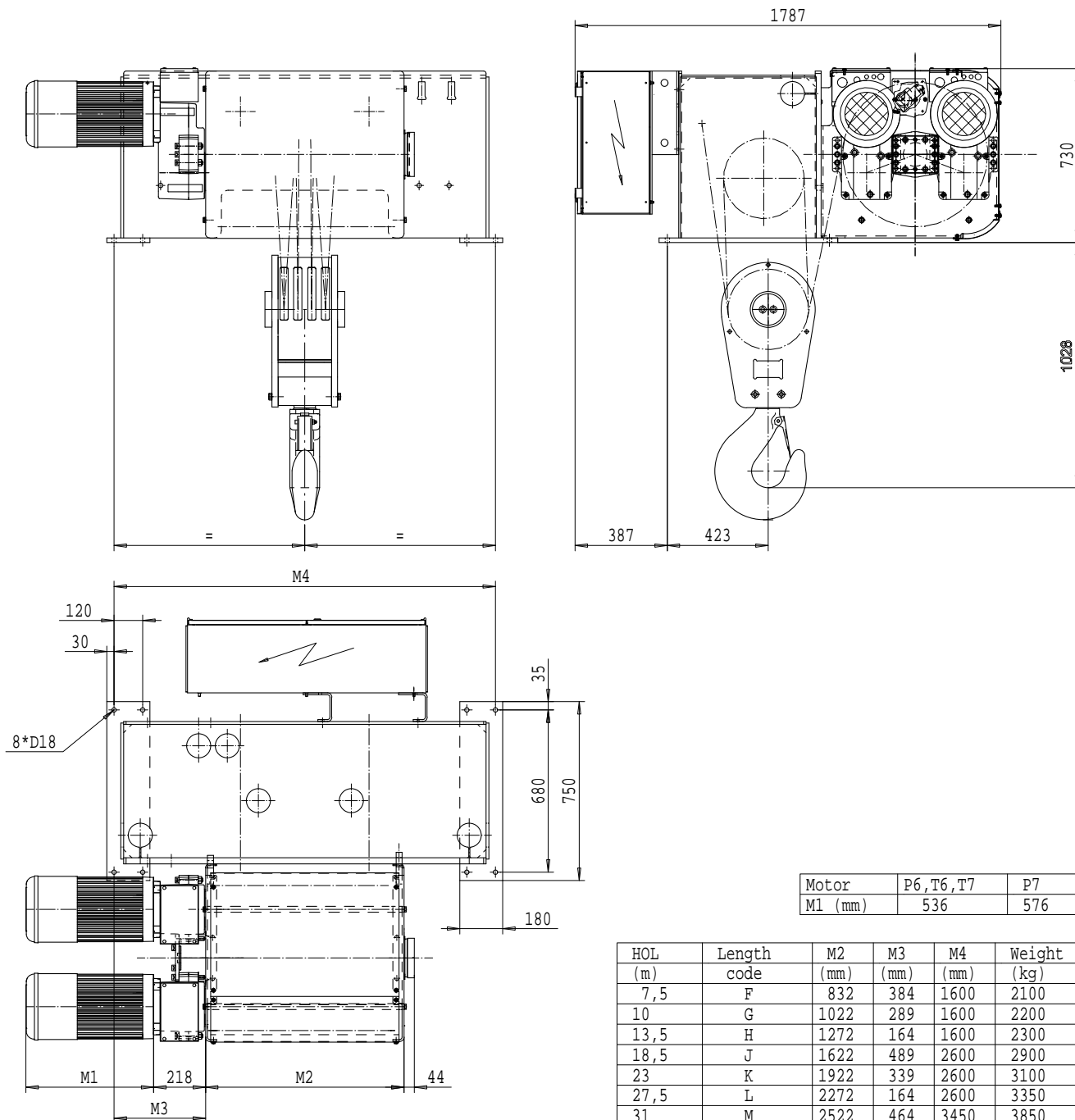
Load (kg)	Class Fem/ISO	Hoisting motor					
		Hoisting speed (m/min): Gear code					
	8/1,2: E	10/1,6: F	12,5/: G	16: H	20: J		
12500	3m/M6	P6, T6	P6, T6	P7, T7	T8	T9	
16000	2m/M5	P6, T6	P6, T6	P7, T7	T8	T9	
20000	1Am/M4	P6, T6	P7, T7	T8	T9	-	

NOVA

Elektroseilzug
Electric wire rope hoist

HOIST; FIXED, 2x4 ROPE FALLS

Hoist type:
NF24F...



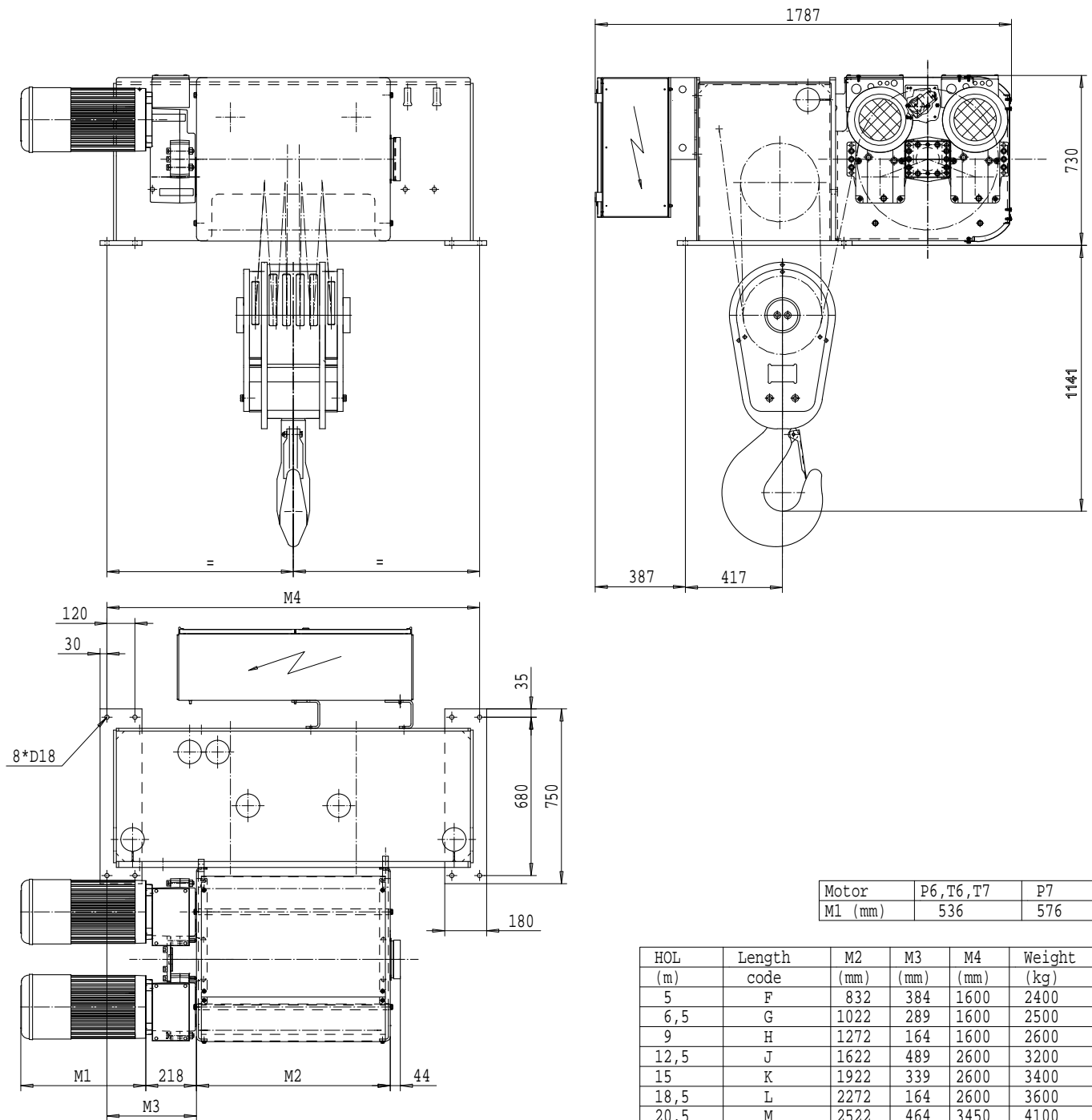
(kg)	Load					Hoisting motor
	Fem/ISO	Hoisting speed (m/min): Gear code				
	4/0,6: E	5/0,8: F	6,3/1: G	8: H	10: J	
25000	3m/M6	P6, T6	P6, T6	P7, T7	T8	T9
32000	2m/M5	P6, T6	P6, T6	P7, T7	T8	T9
40000	1Am/M4	P6, T6	P7, T7	T8	T9	-

NOVA

Elektroseilzug
Electric wire rope hoist

HOIST; FIXED, 2X6 ROPE FALLS

Hoist type:
NF26F...



Motor	P6, T6, T7	P7
M1 (mm)	536	576

HOL (m)	Length code	M2 (mm)	M3 (mm)	M4 (mm)	Weight (kg)
5	F	832	384	1600	2400
6,5	G	1022	289	1600	2500
9	H	1272	164	1600	2600
12,5	J	1622	489	2600	3200
15	K	1922	339	2600	3400
18,5	L	2272	164	2600	3600
20,5	M	2522	464	3450	4100
23,5	N	2822	314	3450	4300

(kg)	Load		Class		Hoisting motor			
	Fem/ISO	Hoisting speed (m/min):	Gear code					
	2,5/0,4: E	3,2/0,5: F	4/0,6: G	5: H	6,3: J			
40000	3m/M6	P6, T6	P6, T6	P7, T7	T8	T9		
50000	2m/M5	P6, T6	P6, T6	P7, T7	T8	T9		
60000	1Am/M4	P6, T6	P7, T7	T8	T9			

NOVA

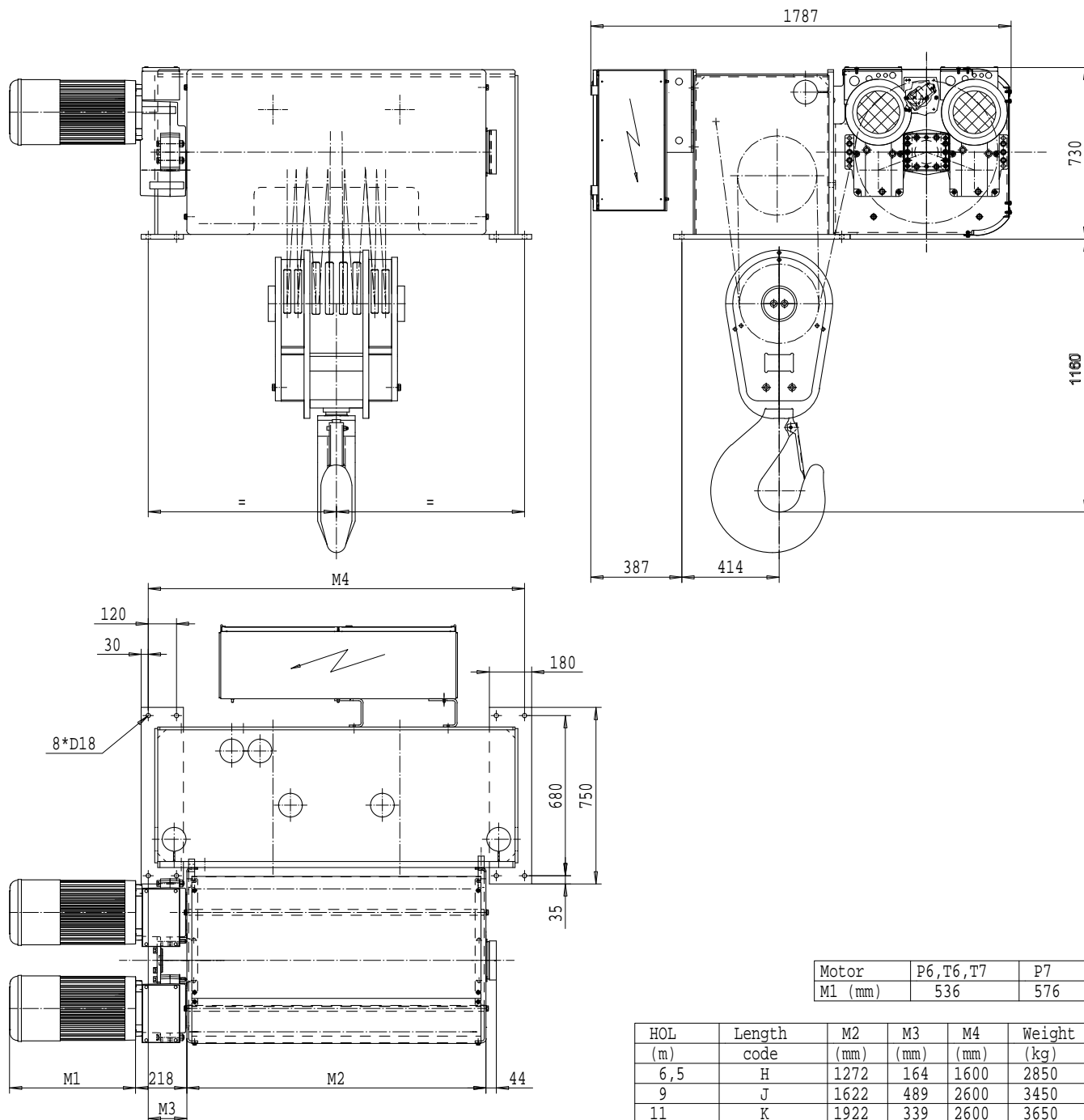
Elektroseilzug
Electric wire rope hoist

HOIST; FIXED, 2X8 ROPE FALLS

Hoist type:
NF28F...



SI-50Hz



Motor	P6,T6,T7	P7
M1 (mm)	536	576

HOL (m)	Length code	M2 (mm)	M3 (mm)	M4 (mm)	Weight (kg)
6,5	H	1272	164	1600	2850
9	J	1622	489	2600	3450
11	K	1922	339	2600	3650
13,5	L	2272	164	2600	3850
15,5	M	2522	464	3450	4350
17,5	N	2822	314	3450	4550

(kg)	Load		Class		Hoisting motor			
	Fem/ISO	Hoisting speed (m/min):	Gear code					
	2/0,3: E	2,5/0,4: F	3,2/0,5: G		4: H		5: J	
	63000	2m/M5	P6, T6	P6, T6	P7, T7	T8	T9	
	80000	1Am/M4	P6, T6	P7, T7	T8	T9	-	

NOVA

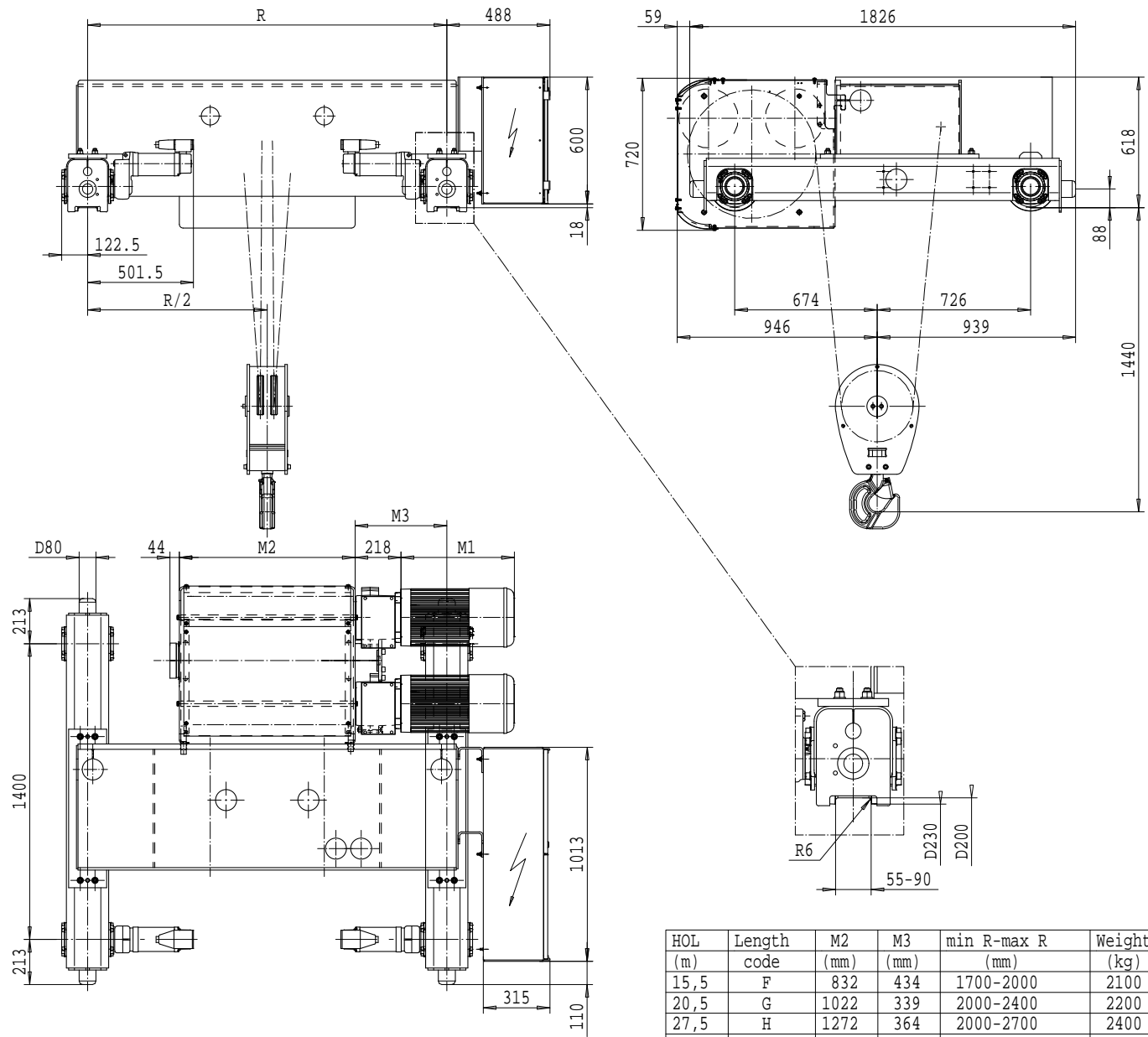
Elektroseilzug
Electric wire rope hoist

TROLLEY; DOUBLE GIRDER, MEDIUM, 2X2 ROPE FALLS



SI-50Hz

Hoist type:
NF22M...



Motor	P6, T6, T7	P7
M1 (mm)	536	576

HOL (m)	Length code	M2 (mm)	M3 (mm)	min R-max R (mm)	Weight (kg)
15,5	F	832	434	1700-2000	2100
20,5	G	1022	339	2000-2400	2200
27,5	H	1272	364	2000-2700	2400
37,5	J	1622	389	2400-3100	2650
46	K	1922	389	2700-3400	2900
55,5	L	2272	414	3100-3800	3200
62,5	M	2522	439	3400-4200	3450
71	N	2822	489	3800-4200	3750

Note:
Min R with service platform
Standard rail gauges: 1700, 2000, 2400, 2700, 3100, 3400, 3800 and 4200
M3 and weight calculated with min R

(kg)	Load		Class		Hoisting motor			
	Fem/ISO	Hoisting speed (m/min)	Gear code					
8/1,2: E	10/1,6: F	12,5/2: G	16: H	20: J				
12500	3m/M6	P6, T6	P6, T6	P7, T7	T8	T9		
16000	2m/M5	P6, T6	P6, T6	P7, T7	T8	T9		
20000	1Am/M4	P6, T6	P7, T7	T8	T9			

SWF Krantechnik GmbH reserves the right to alter or amend the above information without notice.
SWF Krantechnik GmbH behält sich das Recht auf Änderungen oder Richtigstellung ohne weitere Mitteilung vor.

NOVA Elektroseilzug

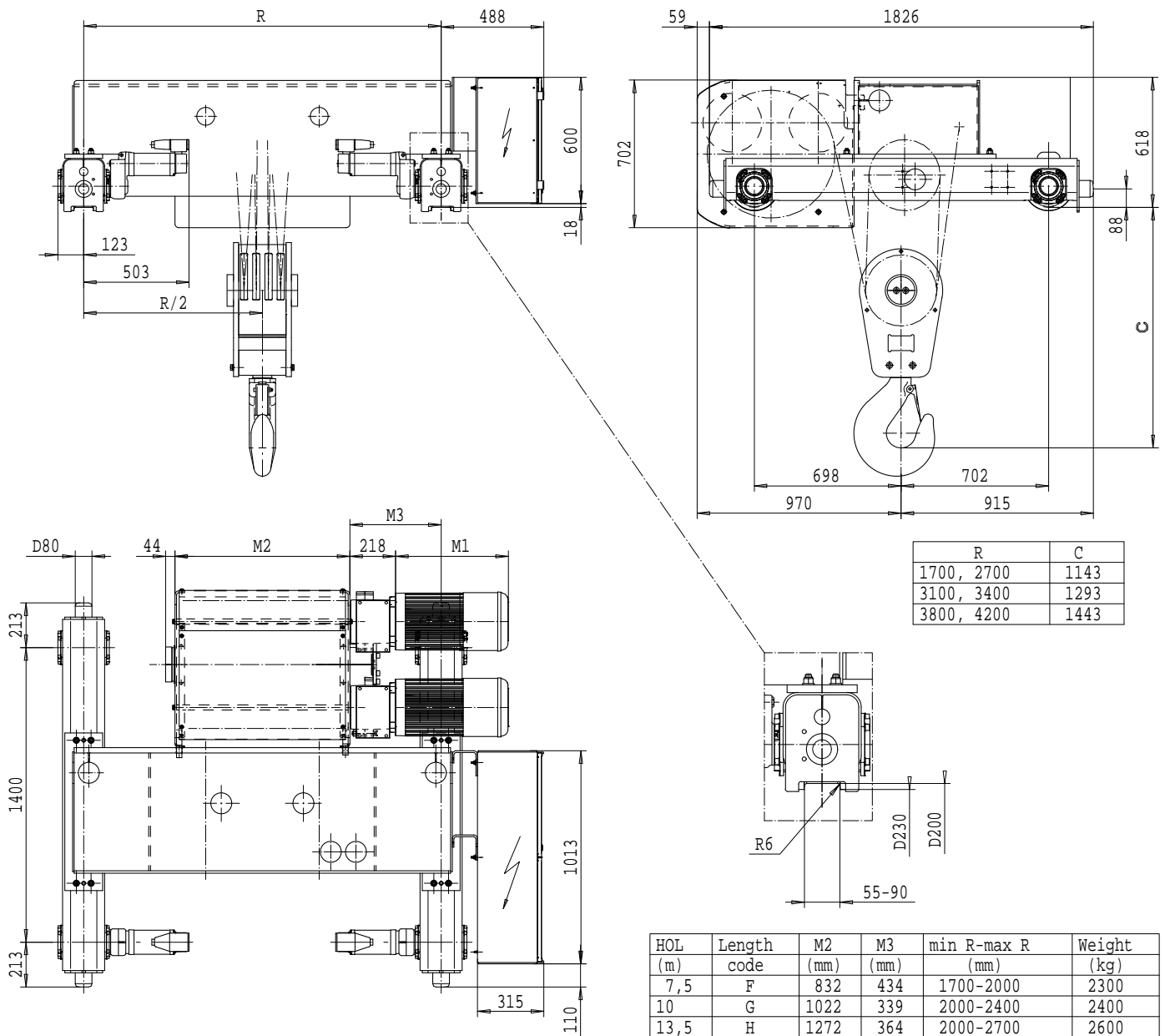
Electric wire rope hoist

TROLLEY; DOUBLE GIRDER, MEDIUM, 2X4 ROPE FALLS



SI-50Hz

Hoist type:
NF24M...



R	C
1700, 2700	1143
3100, 3400	1293
3800, 4200	1443

Motor	P6, T6, T7	P7
M1 (mm)	536	576

HOL (m)	Length code	M2 (mm)	M3 (mm)	min R-max R (mm)	Weight (kg)
7,5	F	832	434	1700-2000	2300
10	G	1022	339	2000-2400	2400
13,5	H	1272	364	2000-2700	2600
18,5	J	1622	389	2400-3100	2850
23	K	1922	389	2700-3400	3100
27,5	L	2272	414	3100-3800	3400
31	M	2522	439	3400-4200	3650
35,5	N	2822	489	3800-4200	3950

Note:

Min R with service platform
Standard rail gauges: 1700, 2000, 2400, 2700, 3100, 3400, 3800 and 4200
M3 and weight calculated with min R

(kg)	Load		Class		Hoisting motor		
	Fem/ISO	Hoisting speed (m/min)	Gear code				
	4/0,6: E	5/0,8: F	6,3/1: G	8: H	10: J		
25000	3m/M6	P6, T6	P6, T6	P7, T7	T8	T9	
32000	2m/M5	P6, T6	P6, T6	P7, T7	T8	T9	
40000	1Am/M4	P6, T6	P7, T7	T8	T9	-	

NOVA Elektroseilzug

Electric wire rope hoist

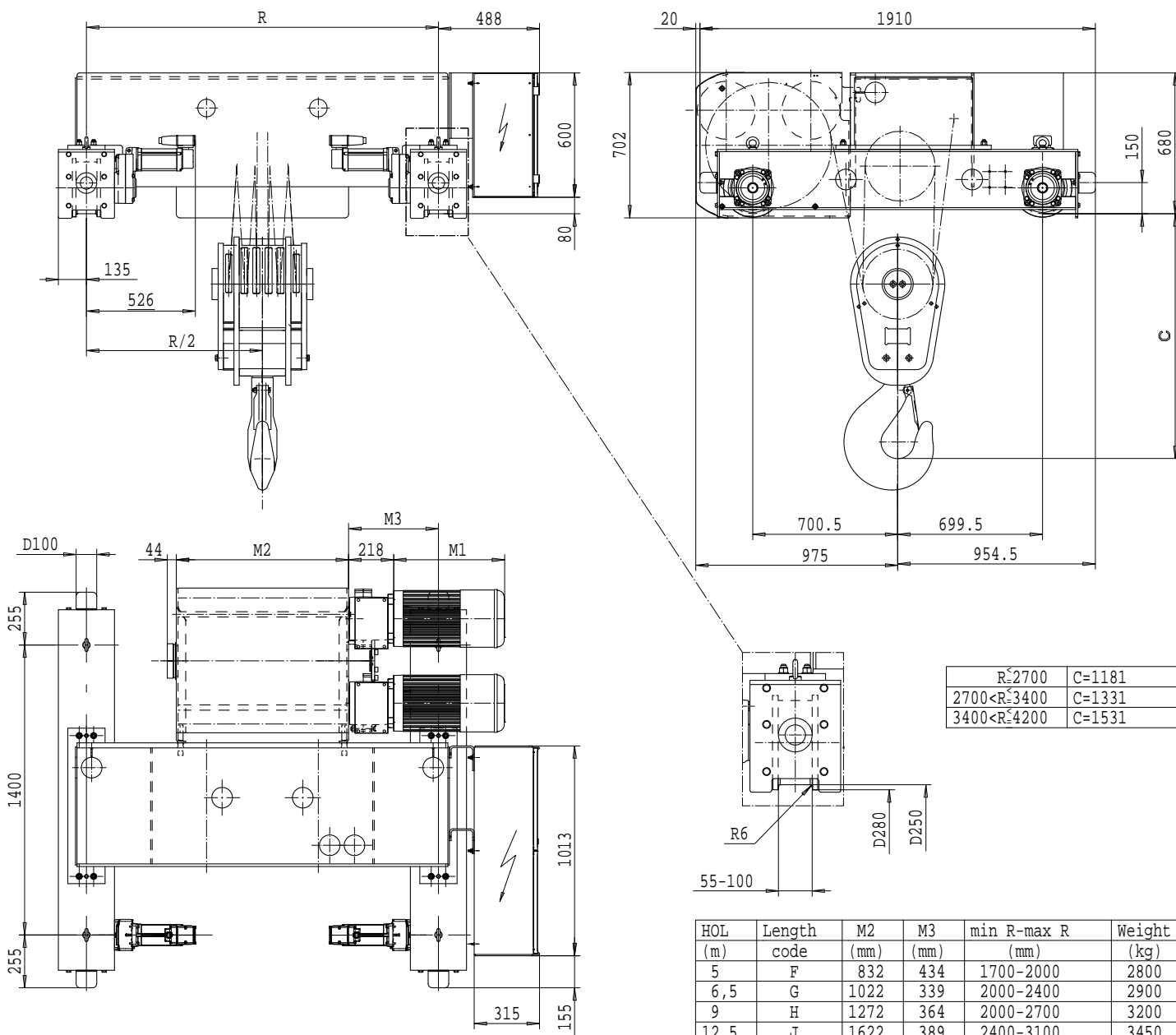
TROLLEY; DOUBLE GIRDER, MEDIUM, 2X6 ROPE FALLS

Hoist type:

NF26M...



SI-50Hz



$R \leq 2700$	C=1181
$2700 < R \leq 3400$	C=1331
$3400 < R \leq 4200$	C=1531

Motor	P6, T6, T7	P7
M1 (mm)	536	576

HOL (m)	Length code	M2 (mm)	M3 (mm)	min R-max R (mm)	Weight (kg)
5	F	832	434	1700-2000	2800
6,5	G	1022	339	2000-2400	2900
9	H	1272	364	2000-2700	3200
12,5	J	1622	389	2400-3100	3450
15	K	1922	389	2700-3400	3750
18,5	L	2272	414	3100-3800	4050
20,5	M	2522	439	3400-4200	4300
23,5	N	2822	489	3800-4200	4550

Note:

Min R with service platform

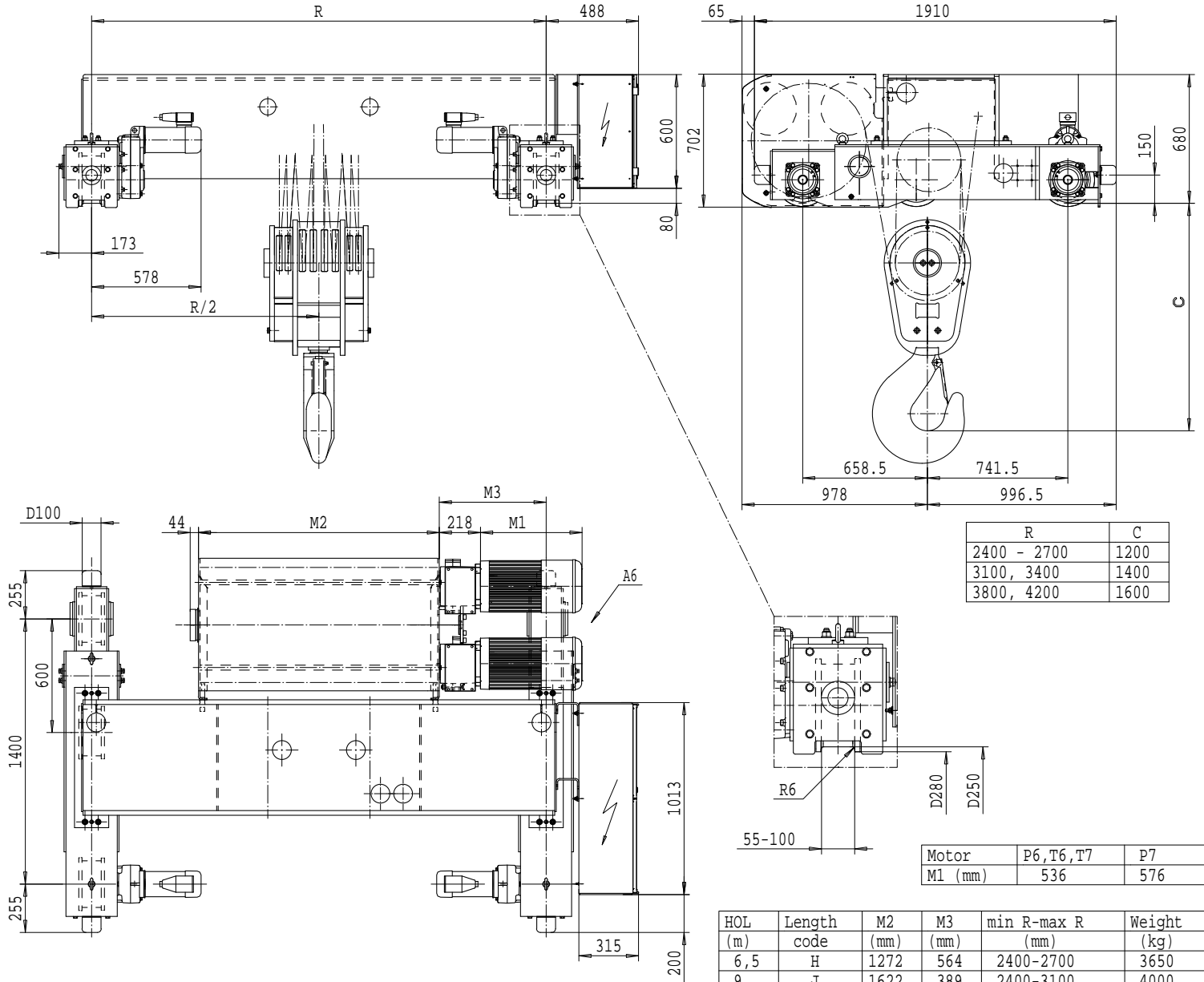
Standard rail gauges: 1700, 2000, 2400, 2700, 3100, 3400, 3800 and 4200

M3 and weight calculated with min R

(kg)	Load		Class		Hoisting motor			
	Fem/ISO	Hoisting speed (m/min):	Gear code					
	2,5/0,4: E	3,2/0,5: F	4/0,6: G	5: H	6,3: J			
	40000	3m/M6	P6, T6	P6, T6	P7, T7	T8	T9	
	50000	2m/M5	P6, T6	P6, T6	P7, T7	T8	T9	
	60000	1Am/M4	P6, T6	P6, T6	P7, T7	T8	T9	-

TROLLEY: DOUBLE GIRDER, MEDIUM, 2X8 ROPE FALLS
Hoist type: NF28M...

SI-50Hz



R	C
2400 - 2700	1200
3100, 3400	1400
3800, 4200	1600

Motor	P6, T6, T7	P7
M1 (mm)	536	576

HOL (m)	Length code	M2 (mm)	M3 (mm)	min R-max R (mm)	Weight (kg)
6,5	H	1272	564	2400-2700	3650
9	J	1622	389	2400-3100	4000
11	K	1922	389	2700-3400	4300
13,5	L	2272	414	3100-3800	4650
15,5	M	2522	439	3400-4200	4950
17,5	N	2822	489	3800-4200	5300

Note:
Min R with service platform
Standard rail gauges: 2000, 2400, 2700, 3100, 3400, 3800 and 4200
M3 and weight calculated with min R

(kg)	Load		Class		Hoisting motor			
	Fem/ISO	Hoisting speed (m/min): Gear code						
	2/0,3: E	2,5/0,4: F	3,2/0,5: G	4: H	5: J			
	63000	2m/M5	P6, T6	P6, T6	P7, T7	T8	T9	
	80000	1Am/M4	P6, T6	P7, T7	T8	T9	-	